

Roest /roōst/

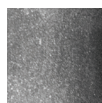
Horizontal Pendant



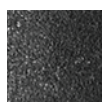
Color



Rust
75h | GP2003-N
150h | GP2004-N




Zinc
75h | GP2003-AZ
150h | GP2004-AZ



Carbon
75h | GP2003-C
150h | GP2004-C

	North America	Europe
Lamping	75h 14W LED, 110-277V, 0-10 dimming 150 30W LED, 110-277V, 0-10 dimming	75h 14,4W LED, 230V, Triac dimmable 150 14,4W LED, 230V, Triac dimmable
Color temperature	2700K	2700K
Lumen output	75h 12W LED, 900 Lumens 150h 24W LED, 1800 Lumens	Dependent on lamp
Driver Type	30W, 110-277V, 0-10 dimming to 1%	
Color Rendering Index	90	
Cord	Black, 6.5 (16ft available)	Black fabric, 2m (5m available)
Canopy	Black powder coated, Ø 5, H 1 (in)	Black powder coated, Ø 10, H 2.5 (cm)
Material	Steel	Steel
Size	Ø 2.375, L 29.5 (in) Ø 2.375, L 59 (in)	Ø 6, L 75 (cm) Ø 6, L 150 (cm)
Weight	8.2lbs 14.3lbs	3,7kg 6,5kg
Country of origin	The Netherlands	

Certification 



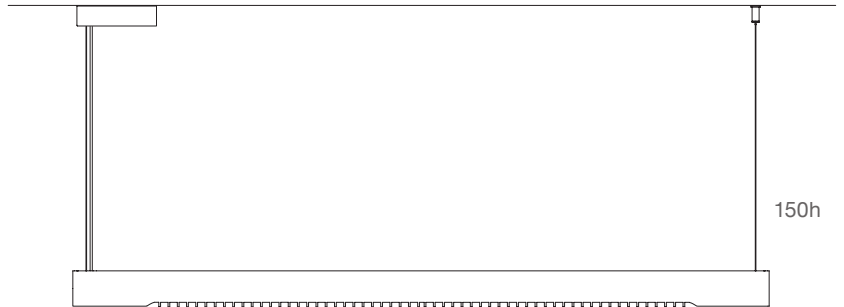
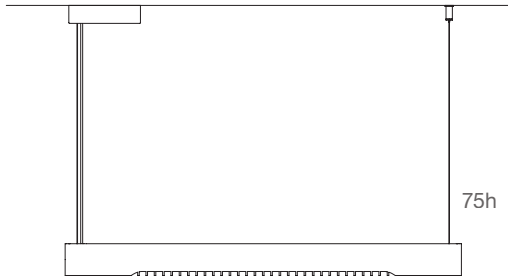
For use in dry location. After the natural oxidation process, all items are treated to stop further rusting. The material will not come off of stain.

**Designed by VanJoost,
in The Netherlands for Graypants.**

Custom cords and canopies are available. Contact our offices for more information.

roest®

Horizontal Pendant



SPECIFICATION CODE

Example: QTY 2 ROEST - GP2004-NZ-16

Qty. **ROEST** - **GP200** - -

① ② ③

For each number, make one selection and enter into the corresponding box above. *Indicates modification with additional lead time and/or costs

① Length

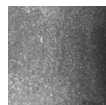
- 3 75h | 29.5"
- 4 150v | 59"

② MATERIAL

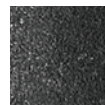
- N
- AZ
- C



N - Rust



AZ - Zinc



C - Carbon

③ Cord Length (ft)

- 6.5
- 16
- Custom