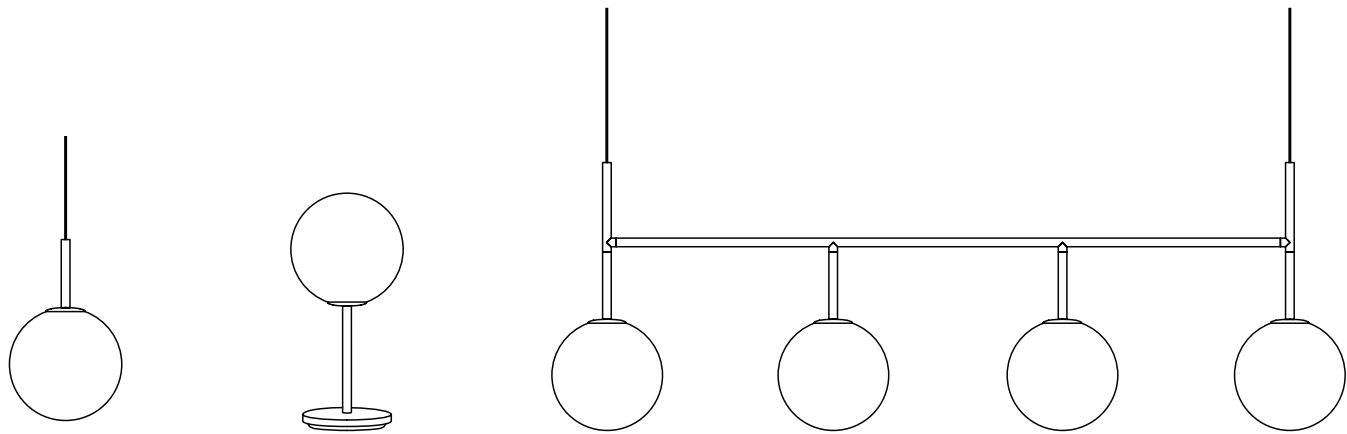
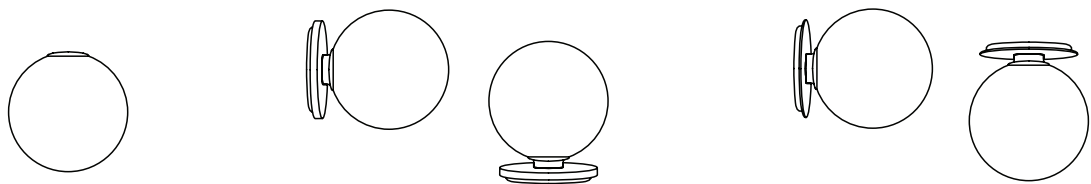


TR Bulb



These instructions are provided for your safety. It is important that the instructions are read carefully and completely before assembling.

This A/I cover below items:

- 1 Piece TR Bulb 7.2 W, E27
- 1 Piece TR Table/Wall Lamp, Low, 2 m Textile cord w. dimmer, 7.2 W, E27 (bulb included)
- 1 Piece TR Pendant, High, 3 m Textile cord, 7.2 W, E27 (bulb included)
- 1 Piece TR Ceiling/Wall, 7.2 W, E27 (bulb included)
- 1 Piece Suspension Lamp, 4 x 7.2 W, E27 (bulb included) – 3 m Textile cord
- 1 Piece TR Table Lamp, High, 2 m Textile cord w. dimmer, 7.2 W, E27 (bulb included)

Technical details

Plug: CE certified plug (MJM 1011 EU plug)
Cord: VDE textile cord
Lightsource details:
LED PC board.
Watt: 7.2W
Lumen output: 70 Lm/W
Color temperature: 2700 K
CRI: > 80

The Lamp Range is tested according to

Table lamp: EN 60598-2-4,
Ceiling/Pendant lamp :EN 60598-2-1
Bulb :EN 62560
EMC: EN 55015, EN 61547, EN 61000-3-2, EN 61000-3-3

The lamp conforms to IP20.

Compatible dimmer types

Fuga: 506DA124/506DA117/506DA109
BG: DM400AP
V-PRO: JQP401W/Z0JP250-P

Care Instructions

To clean simply wipe with a soft dry cloth. Turn off power before cleaning. Do not use any cleaners with chemicals, solvents, or harsh abrasives.

BE SURE THE ELECTRICITY TO THE WIRES YOU ARE WORKING ON IS SHUT OFF;
EITHER THE FUSE IS REMOVED OR THE CIRCUIT BREAKER IS TURNED OFF.

Please check the specific rules for electrical installation work in your country. Some countries may require an authorised electrical contractor.

Important

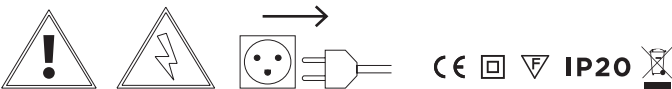
If you have any problems regarding the electrical installation, contact a certified electrician. Always shut off power to the circuit before starting installation work. The external flexible cable or cord of this luminaire cannot be replaced. If the cord is damaged. If the external flexible cable or cord of this luminaire is damaged, it shall be exclusively replaced by the manufacturer or his service agent or a similar qualified person in order to avoid a hazard.

WARNINGS

- Dispose of plastic bag from packaging and do not allow children to play with it.
- Keep product well out of children’s reach.
 - Do not attempt installation of product if you are not competent to do so yourself.
 - Consult a professionally qualified electrician if in any doubt.
 - Do not place the cable in reach of small children or anywhere there is a risk of falling over it

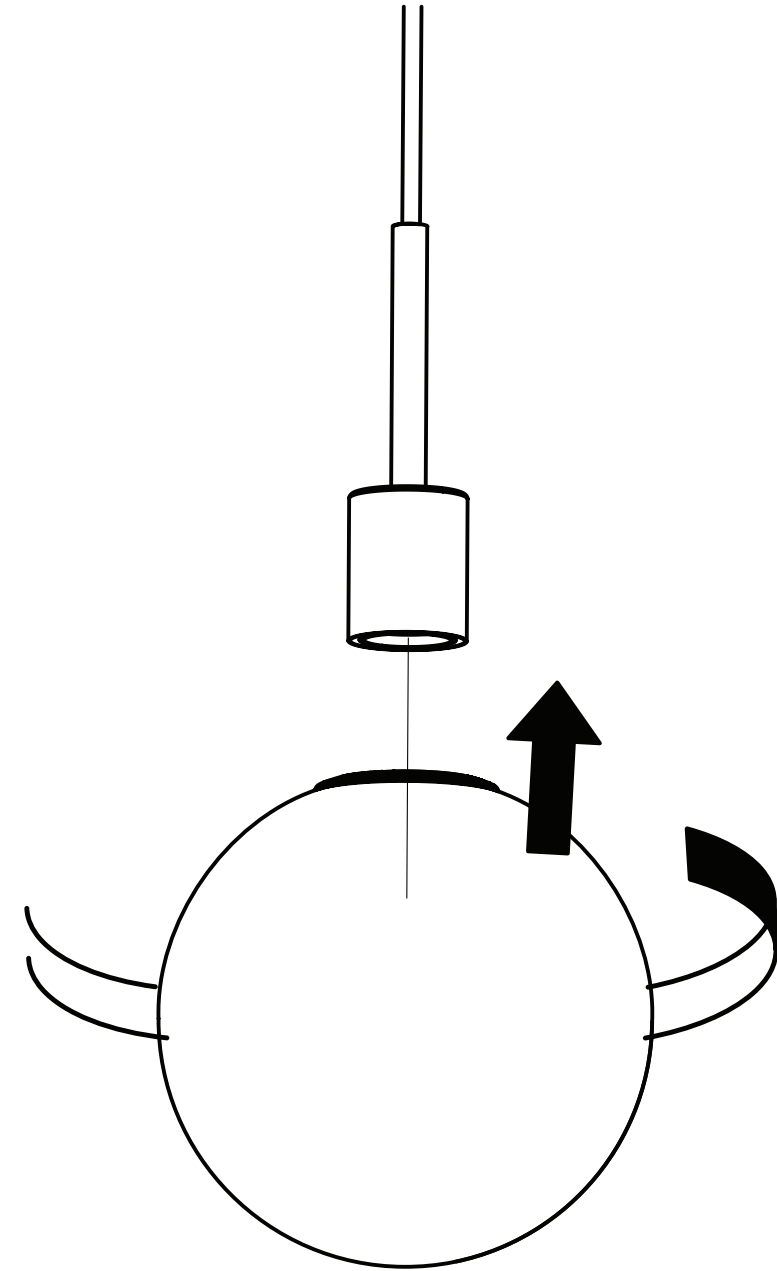
Disposal

When your light fitting comes to an end of it’s life or you choose to update or upgrade it by replacing it. Please do not dispose of it with your normal household waste. Please recycle where facilities exist. When you need to dispose of this fitting, check with your retailer or local authority for suitable options. New regulations will encourage the recycling of Waste from Electrical and Electronic Equipment (European ‘WEEE Directive’ effective August 2005).

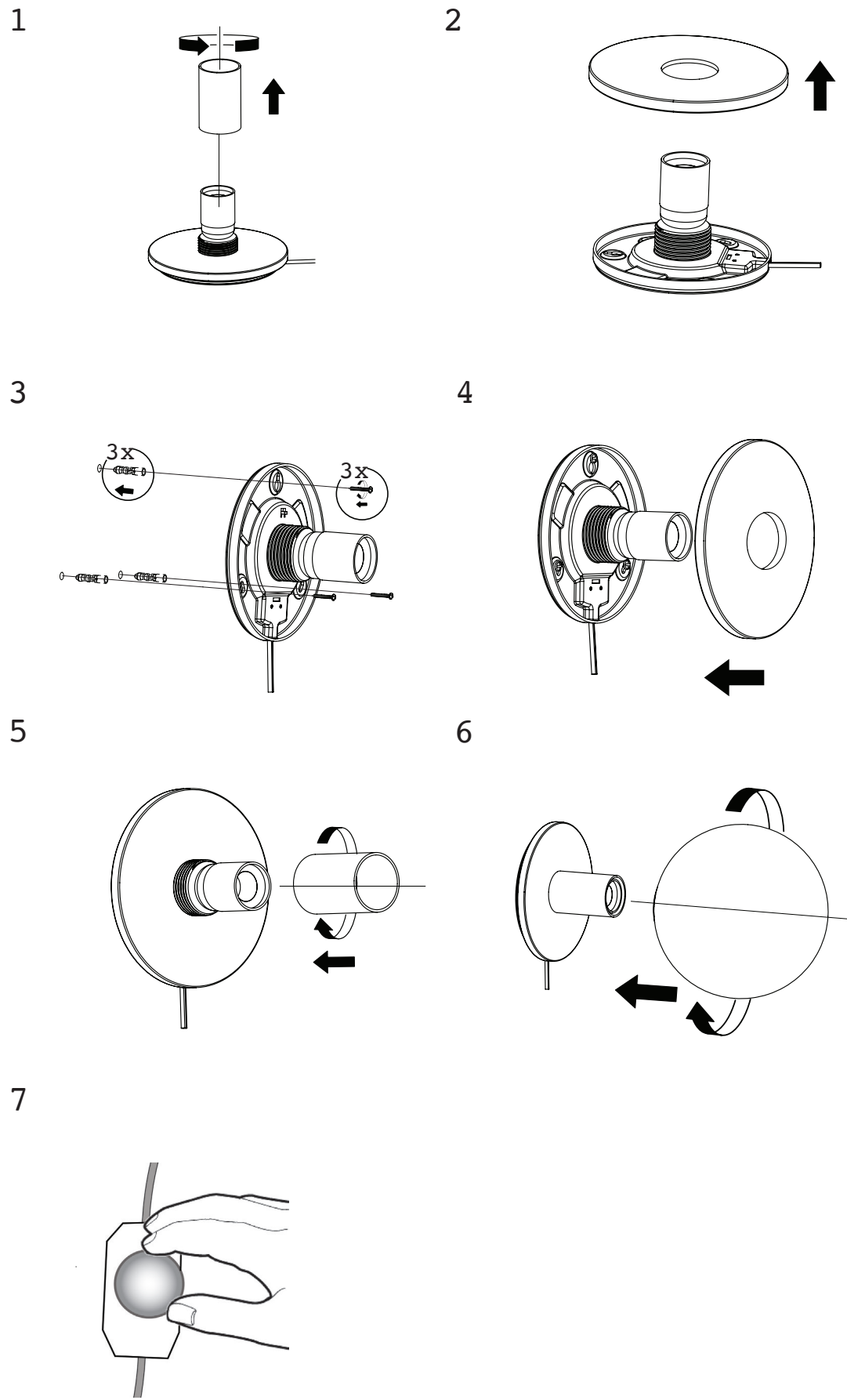
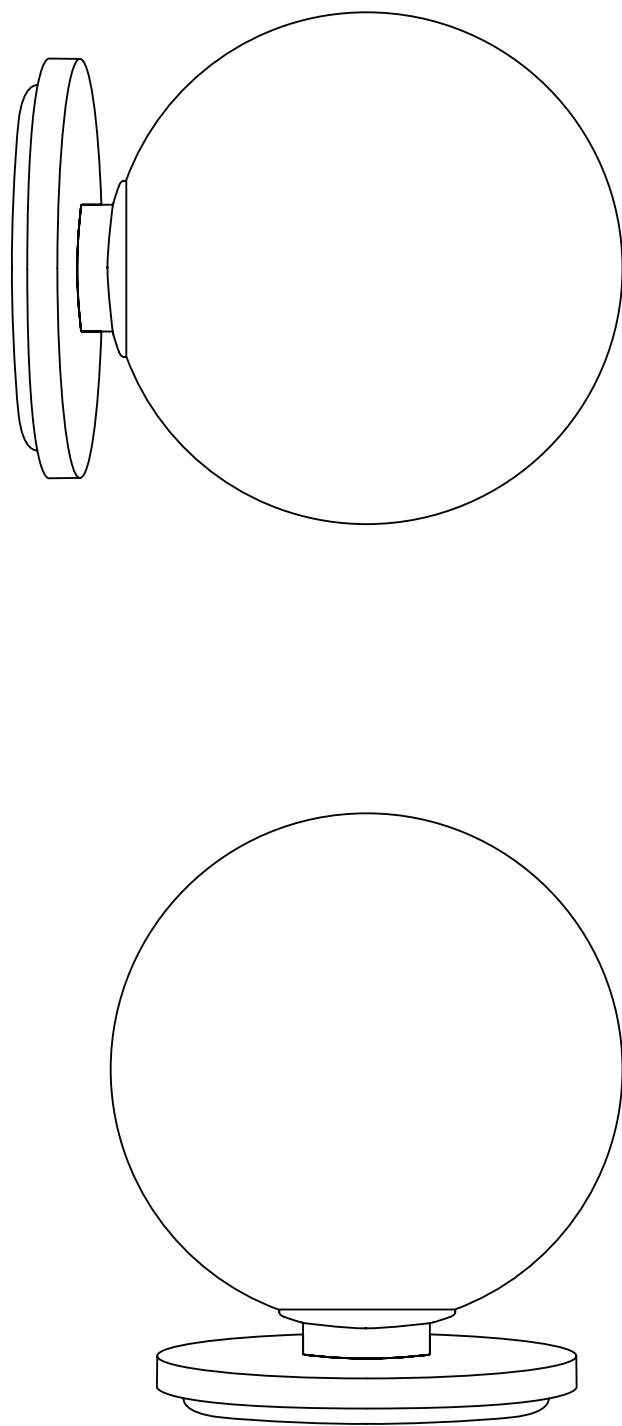


NOTE

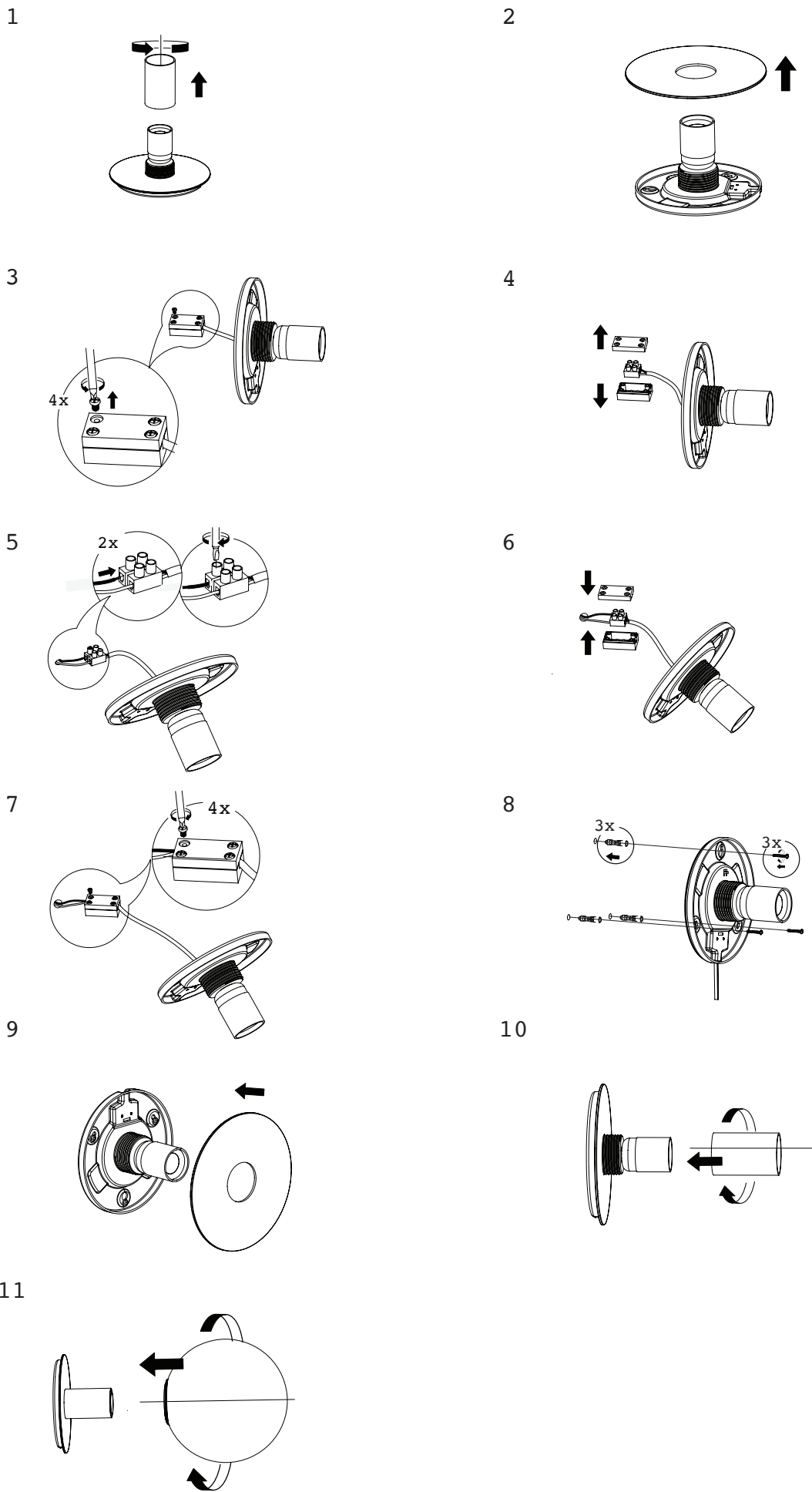
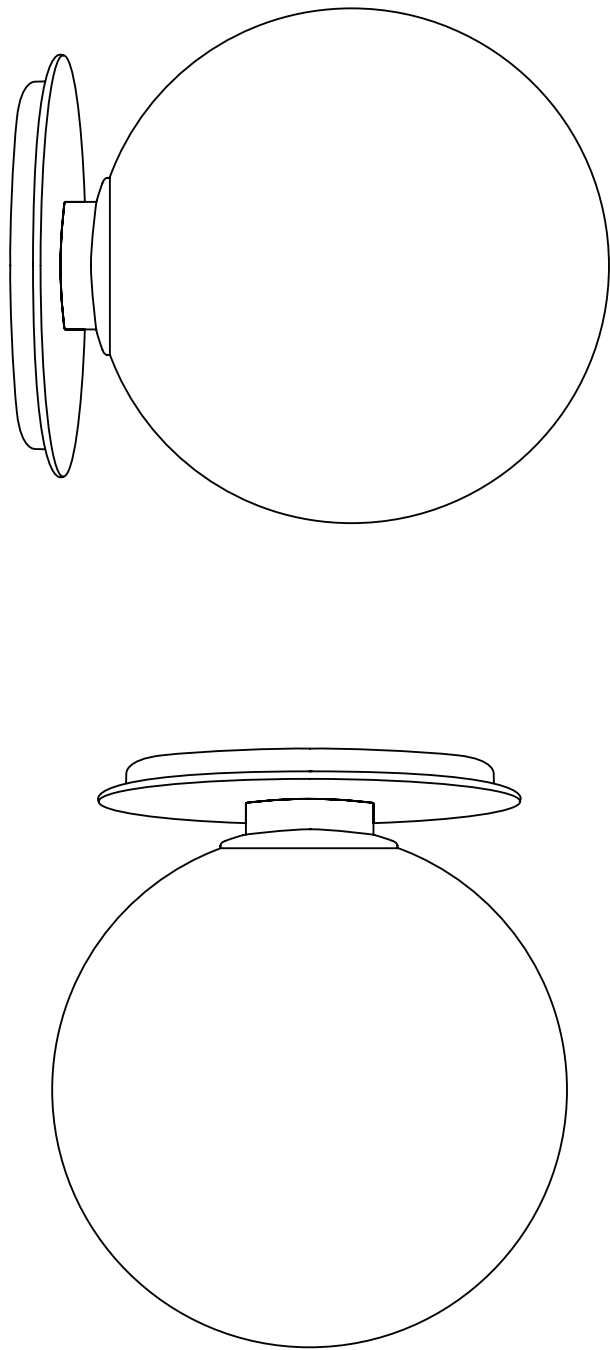
Dear Customer, please note that when you screw in this large light bulb, the momentum (force) is larger than on smaller bulbs due to its larger diameter; therefore please be careful when screwing it in so as to avoid over-screwing thereby destroying the socket thread.



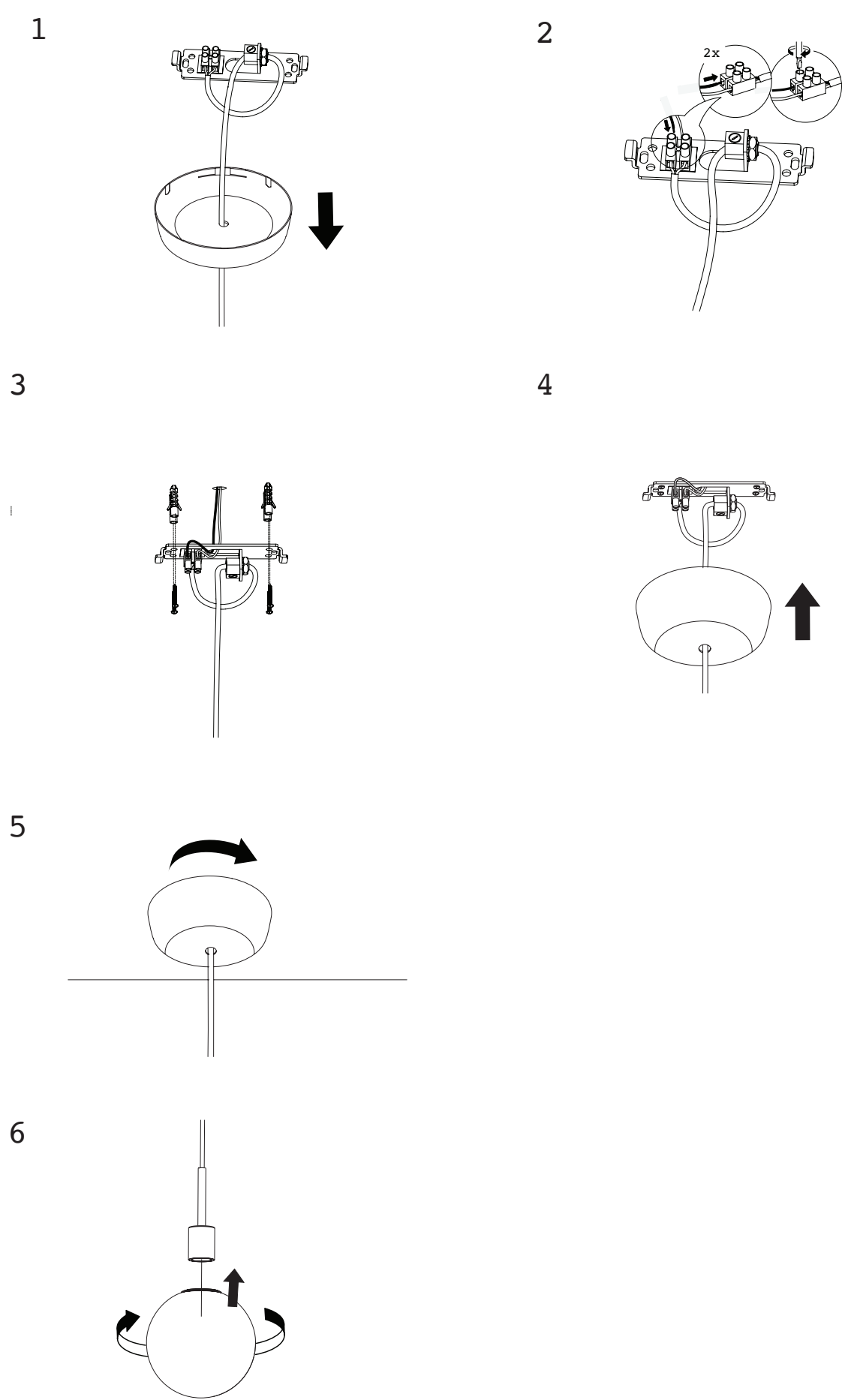
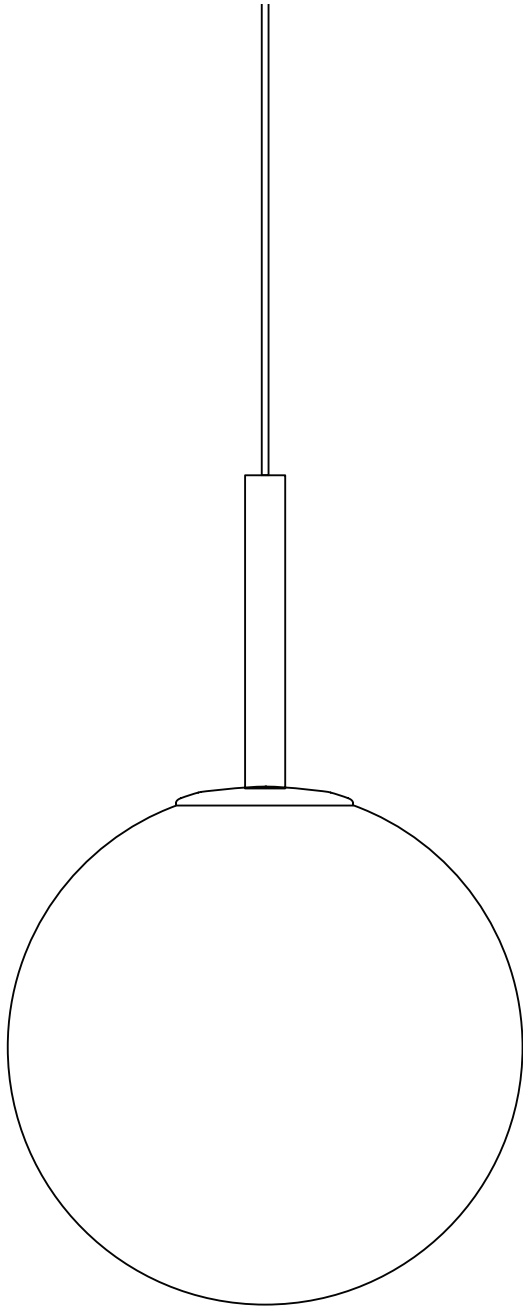
TR Bulb, Table/ Wall Lamp, Grey Marble



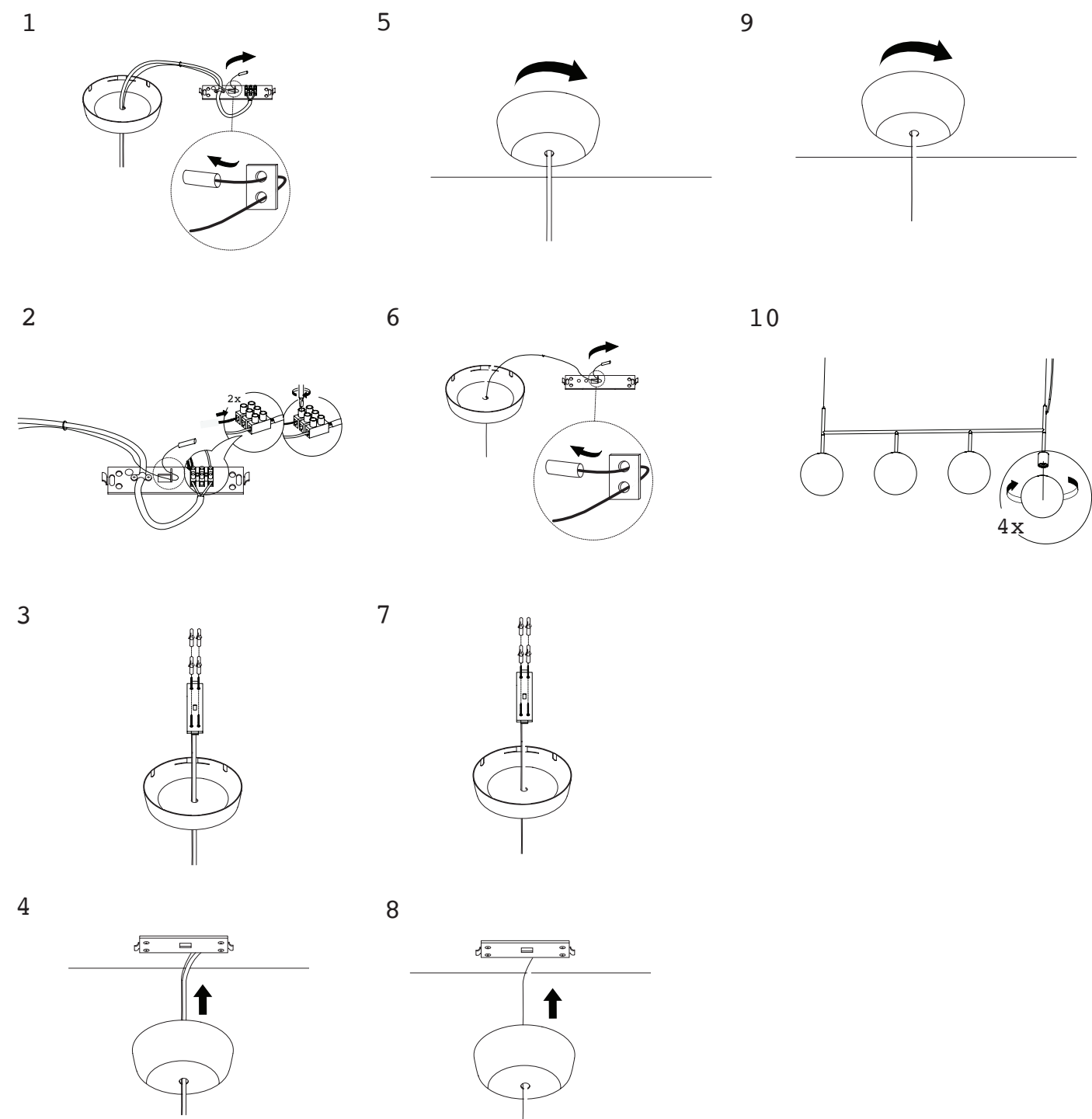
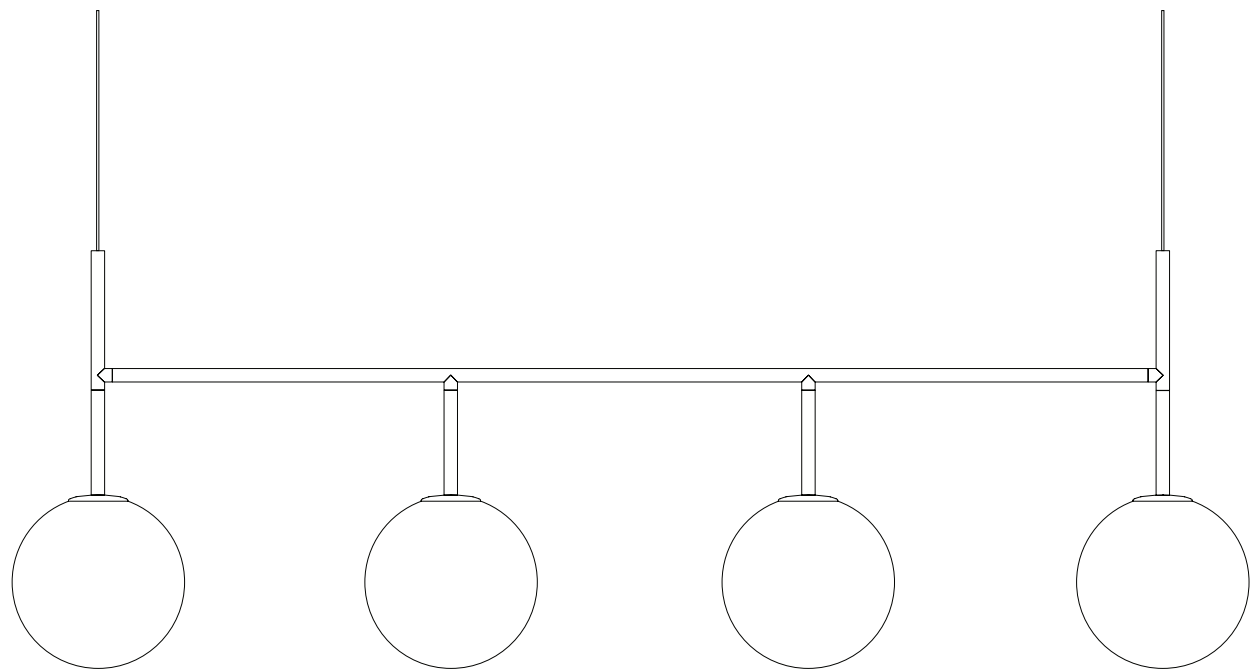
TR Bulb, Ceiling/ Wall Lamp, Black Metal



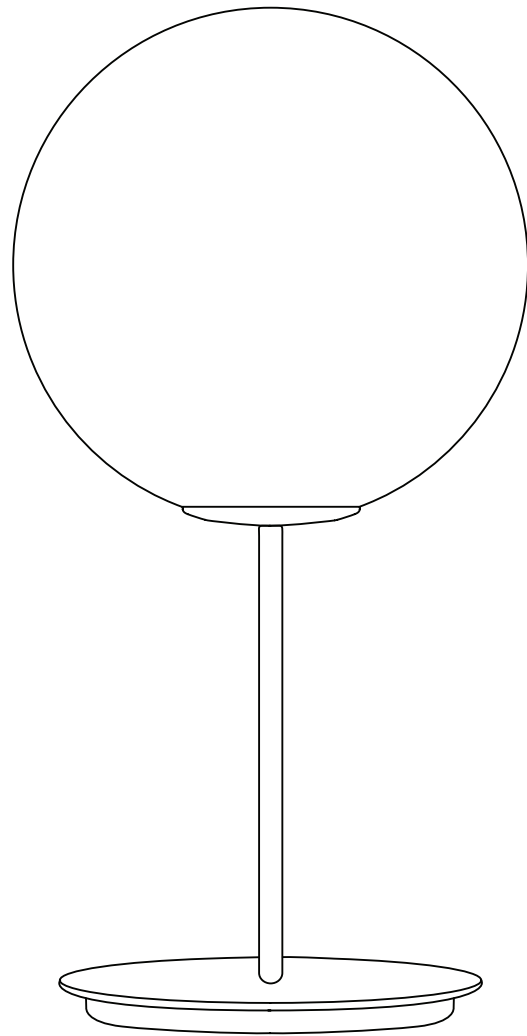
TR Bulb, Pendant Lamp, Black



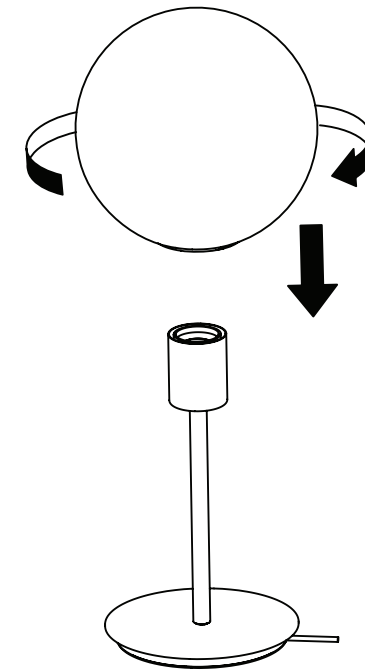
TR Bulb, Suspension Lamp, 105cm



TR Bulb, Table Lamp, High



1



2

