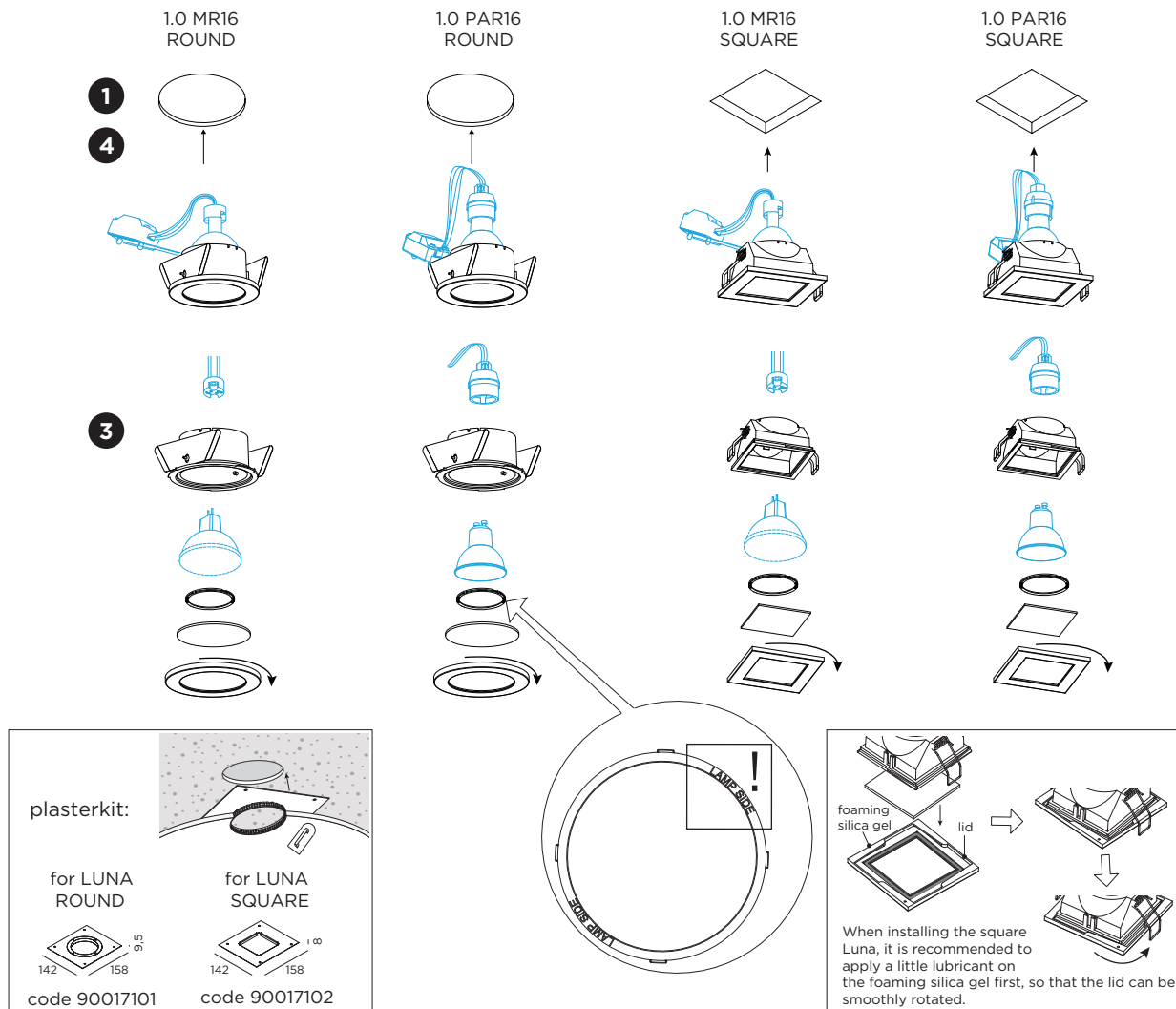


LUNA (ROUND / SQUARE)

INSTALLATION INSTRUCTIONS | AUGUST 2022



DIMENSIONS

1.0 MR16 ROUND: $\varnothing 92$, 76-83, 100, min4



1.0 PAR16 ROUND: $\varnothing 92$, 76-83, 120, min4



1.0 MR16 SQUARE: 76-76, 100, 8-15



1.0 PAR16 SQUARE: 76-76, 120, 8-15



MOUNTING INSTRUCTION

1 Make a hole in the ceiling according to the prescribed dimensions.

2 POWER CONNECTION

PAR16

Single connection



Multiple connection

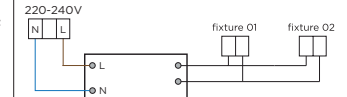


MR16

Single connection



Multiple connection



3 Put the bulb in the fixture and mount the cover on the housing.

4 Insert the fixture in the hole.
OPTIONAL: insert with plasterkit.

PB19-010-902-00_V0