

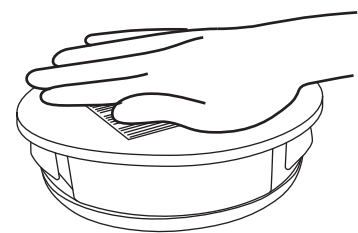
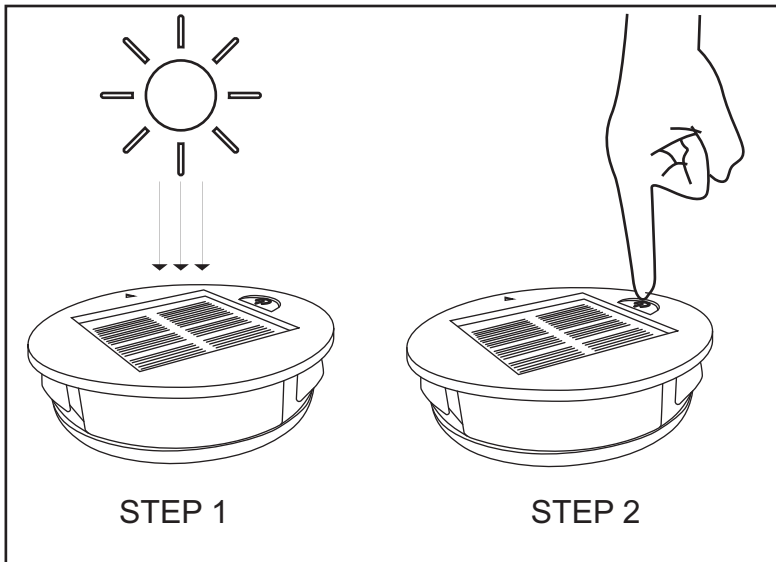
CHARGING AND OPERATION:

STEP 1. Charge the solar light by placing it under direct sunlight for at least 8 hours.

STEP 2. Push the switch button down and the solar light will automatically charge under direct sunlight during the day time and illuminate at night.

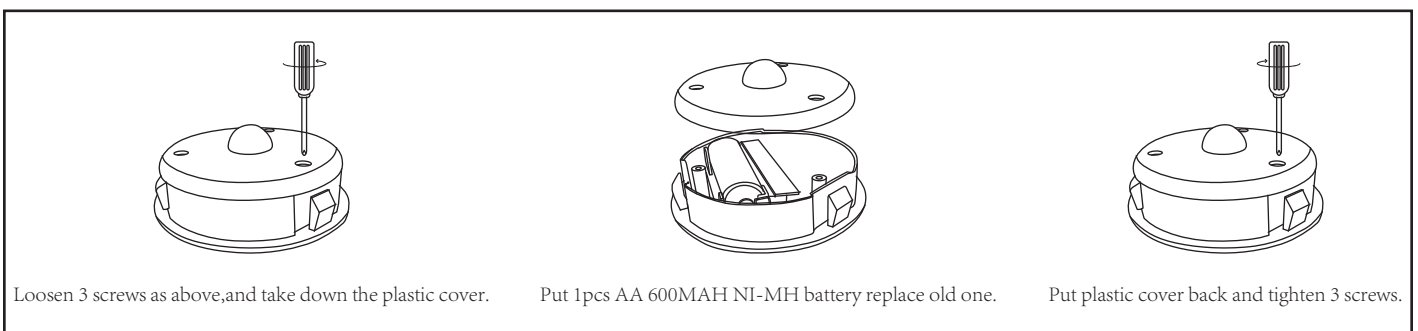
NOTE: In order to verify that the light is on or not, cover the solar panel with your hand and light will turn on automatically.

Please allow the battery to charge at least 8-12 hours before first use. It can light 6-8 hours.



cover the solar panel with your hand and light will turn on automatically.

Battery replacement



20x22cm