

# TUBE CARRÉ 2.0

30-Aug.-2018

## 2.0 LED

LED 2xLED 8W | 220-240VAC | 50-60Hz | COB 3-step | incl. PS | phase-cut dim

CE IP65 0.9m

3000K | >90CRI | 2x380lm

white texture

744264W5

dark grey texture

744264D5

black texture

744264B5

## 2.0 PAR16

2xPAR16 LED max.10W | GU10 | 100-240VAC | 50-60Hz

CE IP65 0.9m

white texture

744220W0

dark grey texture

744220D0

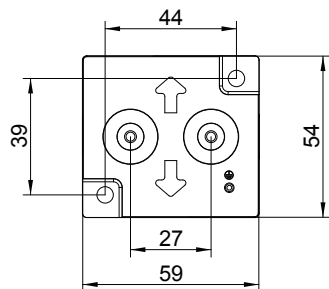
black texture

744220B0

### OPTIONAL

for PAR16 LED lamps see our catalogue

backplate:

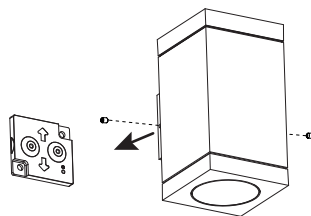


necessary for IP-rating

	A	B	C
use pin to make hole, not a knife			
CABLE			
TYPE	ROUND H05RN-F H07RN8-F H07RN-F	ROUND H05RN-F	ROUND
OUTSIDE Ø	min 6.8mm max 8.9mm	min 5mm max 6.8mm	min 1.5mm max 2.6mm
CONDUCTION SECTION	2or3x 0.75mm <sup>2</sup> 2or3x 1.0mm <sup>2</sup> 2or3x 1.5mm <sup>2</sup>	2or3x 0.75mm <sup>2</sup> 2x 1.0mm <sup>2</sup>	0.75mm <sup>2</sup> 1.5mm <sup>2</sup>

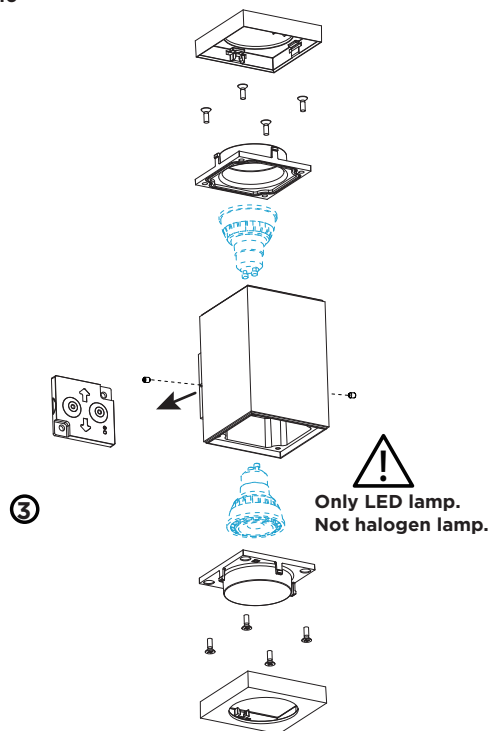
## 2.0 LED

①  
④

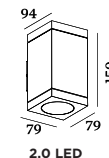


## 2.0 PAR16

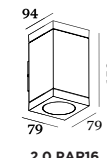
①  
④



## DIMENSIONS



2.0 LED



2.0 PAR16

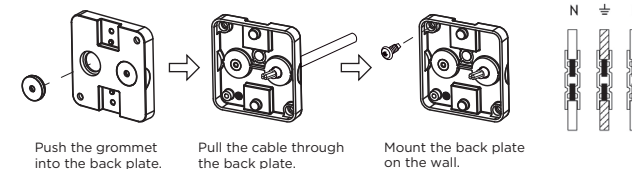
## ① MOUNTING INSTRUCTION

Remove the backplate and fixate it to the wall with screws.

## ② POWER CONNECTION

Exterior: WATERPROOF Connection

IP-rated connections for wall fixtures: cable isolation for round cables  $\varnothing$  4.5-7.5 mm, should be in the grommet. For cable use  $\varnothing$  7.0-9.5 mm: replace the grommet with the other grommet in the bag. Refer to overview table.



## ③ For PAR16 version:

- Pry the body cover to open with a straight screwdriver.
- loosen the four screws of the glass cover and remove it.
- Insert the lamp
- put back the glass cover with the four screws.
- place back the body cover by pushing to click.

## ④ Mount the luminaire on the backplate with the allen screws.

The light source of the integrated LED is not replaceable; When the light source reaches its end of life the whole luminaire shall be replaced.

Caution, risk of electric shock



WEVER & DUCRÉ  
LIGHTING

www.weverducre.com

Wever & Ducre bvba Spinnerijstraat 99/21 8500 Kortrijk

INSTALLATION  
INSTRUCTIONS