

Roest /roōst/

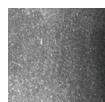
Sconce30



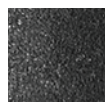
Color



Rust
GP2052-N



Zinc
GP2053-AZ



Carbon
GP2054-C

	North America	Europe
Lamping	2 x Max 10W LED, GU10, 120V	2 x Max 10W LED, GU10, 220-240V
Color temperature	2700K (recommended)	2700K (recommended)
Lumen output	Dependent on lamp	Dependent on lamp
Material	Steel	Steel
Size	Ø 2.375, H 11.75 (in)	Ø 6, D9,5 H 30 (cm)
Weight	3.5lbs	1,6kg
Country of origin	The Netherlands	The Netherlands
Certification		

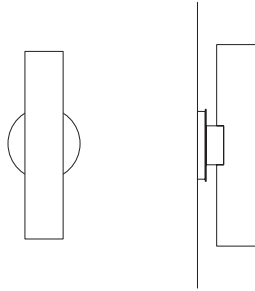
For use in dry location. After the natural oxidation process, all items are treated to stop further rusting. The material will not come off of stain.

**Designed by VanJoost,
in The Netherlands for Graypants.**

Custom cords and canopies are available. Contact our offices for more information.

roest®

Sconce30



SCONCE

SPECIFICATION CODE

Example: QTY 2 ROEST - GP2053-NZ

ROEST - **GP20** -

Qty. ①

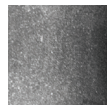
For each number, make one selection and enter into the corresponding box above. *Indicates modification with additional lead time and/or costs

① MATERIAL

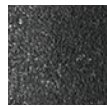
- 52-N
- 53-AZ
- 54-C



52-N - Rust



53-AZ - Zinc



54-C - Carbon