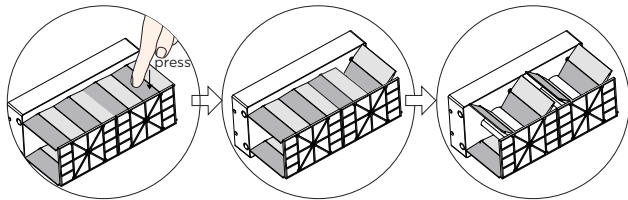
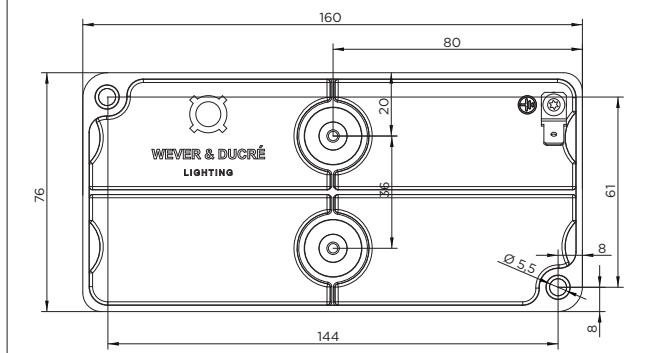


with flaps, the beam angle is adjustable:



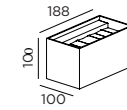
mounting base dimensions



necessary for IP-rating

	A	B	C
CABLE			
TYPE	ROUND H05RN-F H07RN8-F H07RN-F	ROUND H05RN-F	ROUND
OUTSIDE Ø	min 6.8mm max 8.9mm	min 5mm max 6.8mm	min 1.5mm max 2.6mm
CONDUCTION SECTION	2or3x 0.75mm ² 2or3x 1.0mm ² 2or3x 1.5mm ²	2or3x 0.75mm ² 2x 1.0mm ²	0.75mm ² 1.5mm ²

DIMENSIONS



1.0 LED
EXTERIOR

MOUNTING INSTRUCTION

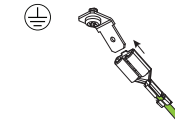
- 1 Remove the mounting base from the LED inset by loosening the side socket screws and mount it on the wall with screws (screws are not included).

2 POWER CONNECTION

Connect to 220-240V.

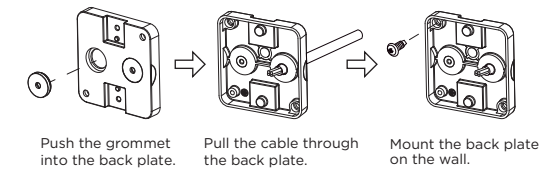


Connect the mounting base earth cable.

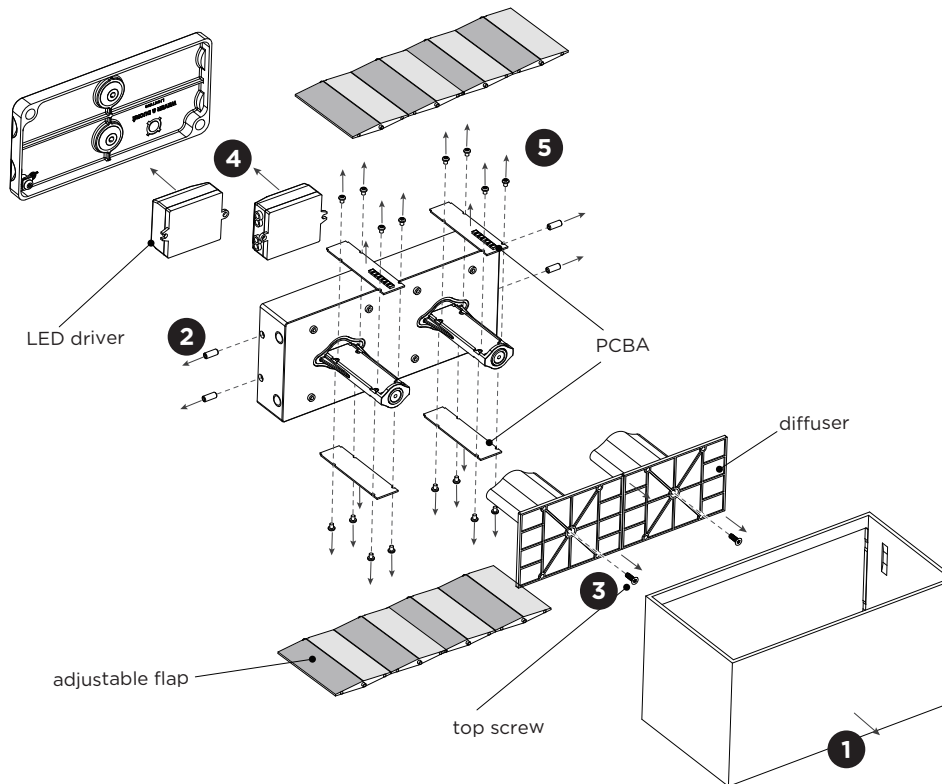


Please use a matching grommet based on the used 220-240V cable and the corresponding type in the overview table.

for example:



- 3 Fix the LED inset on the base with the side socket screws.
- 4 Fix the cover to the LED inset by pushing so the ball catch system will fix in the slots.



DISMOUNTING AND RECYCLING INSTRUCTIONS

Light source & driver

- 1 Pull off the cover.
- 2 Loosen the socket screws from the side and take the LED module from the wall.
- 3 Loosen the top screws and remove the plastic parts.
- 4 Pull off the LED drivers and disconnect the wires of PCBAs to remove the drivers.
- 5 Unscrew and pull out PCBA to remove it.



The driver can be replaced by the end user.



The light source is replaceable by an authorized professional.
For advice contact your Wever & Ducré customer service contact point.



This luminaire contains a light source with the energy class F.