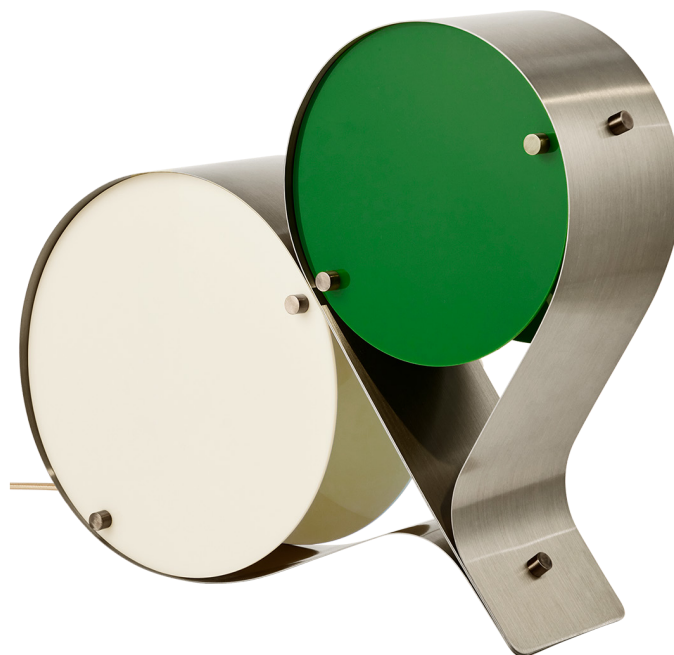

Coppia Table Lamp, EU

Designed by Vibeke Fønnesberg Schmidt - 2024



ITEM NUMBER

Coppia Table Lamp - Base: Bronze Steel, Shade: Ivory, Olive	10134199
Coppia Table Lamp - Base: Bronze Steel, Shade: Ivory, Clover	10134200
Coppia Table Lamp - Base: Bronze Steel, Shade: Ivory, Blush	10134321

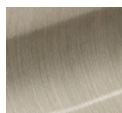
DESCRIPTION

The Coppia Table Lamp is a new sculptural twin-bulb table lamp designed for GUBI by Vibeke Fønnesberg Schmidt. Featuring two discs of Fønnesberg Schmidt's signature plexiglass housed in a curving metal case, the elegantly industrial design represents both a new material and a new designer for GUBI. The fluid yet geometric design is sturdy enough to be used as either a table or floor lamp, moving easily from desktop to bedside, shelf to window-sill as desired. Coppia is available in tempered and brushed stainless steel, its bronze glow contrasting with a choice of three nature-inspired plexiglass colorways: Ivory/Blush, Ivory/Olive, and Ivory/Clover.

Materials & Finishes

BASE FINISH

Bronze Steel



SHADE FINISH

Ivory, Olive, Clover, Blush



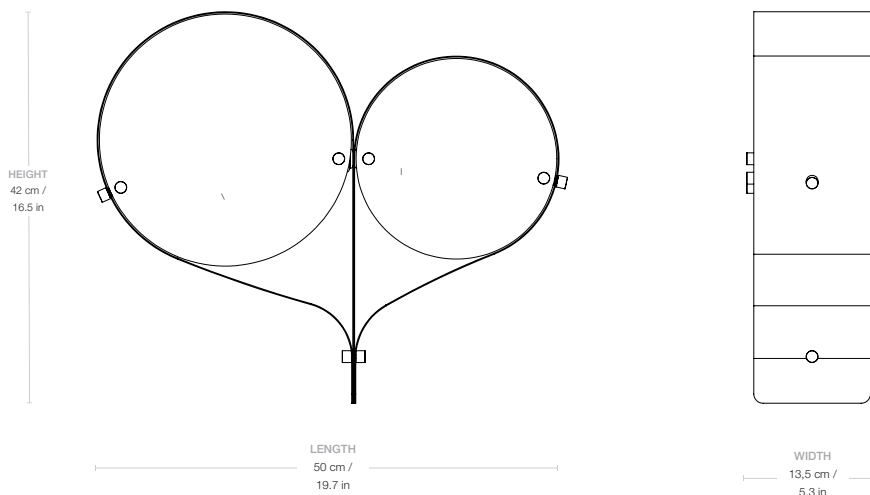
MATERIAL

Tempered Stainless Steel, Acrylic

CORD

Golden textile

Dimensions



LAMP WIDTH

50 cm / 19.7 in

LAMP DEPTH

13,5 cm / 5.3 in

LAMP HEIGHT

42 cm / 16.5 in

CABLE LENGTH

200 cm / 78.7 in

Weight

TOTAL WEIGHT

3,22 kg / 7 lbs

Number of parcels

1

PACKAGING LENGTH

48 cm / 18.9 in

PACKAGING WIDTH


54 cm / 21.2 in

PACKAGING HEIGHT	17 cm / 6.7 in
PACKAGING WEIGHT	2 kg / 4.4 lbs
GROSS WEIGHT	5,22 kg / 11.5 lbs

Electrical Specifications

BULB SOCKET	2 X E14, Ø40mm
RECOMMENDED BULB	4W LED, 320-470 Lumen, 2700K
DIMMER	No
SWITCH	On Cord
VOLTAGE	240V
BULB INCLUDED	No

Test & Certifications

CERTIFICATION	
ISOLATION CLASS	II
IP CLASSIFICATION	IP20
