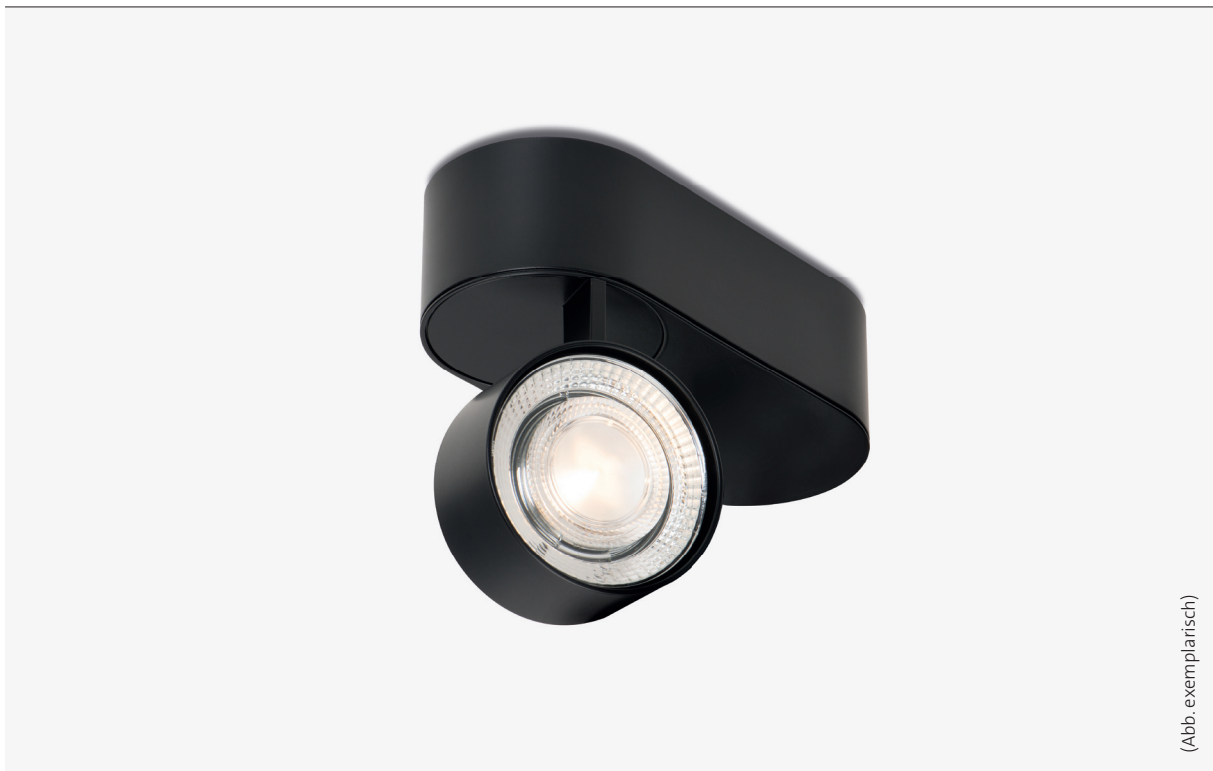


## wittenberg 4.0 | wi4-ab-1ov

AUFBAUSTRALER

Kompakte Bauform, filigranes Gehäuse, größte Gestaltungsvielfalt.

\* Leuchtenserie sowohl für private Nutzung wie anspruchsvolle Spezialanwendungen



Design: Jan Dinnebier, mawa / Engineering: mawa

Produkt- variante	Leistung in W <sup>LED</sup>	Abstrahlwinkel in Grad	Dimmungen Matchcode	Lichtfarben und Lichtstrom <sup>LED</sup> in Kelvin und Lumen
HighCRI	12,7 W	12°/ 24°/ 38°	-4, -7, -9	2700 K / 930 lm, 3000 K / 980 lm, 4000 K / 1100 lm
d2w	12 W	12°/ 24°/ 38°	-4, -7, -9	1800-3000 K / 1045 lm
		(Wechsoptiken mittels Saugheber oder Silikonpad austauschbar)	(weitere Lichtfarben auf Anfrage)	

Matchcode-Kürzel für Dimmungen: -2 Drehpotentiometer am Gehäuse / -4 DALI / -7 Phasen- und abschnitt / -9 Bluetooth

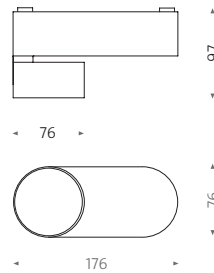










# wittenberg 4.0 | wi4-ab-1ov

AUFBAUSTRALER

Dimensionen:



<b>Farbe:</b>	 schwarz matt (RAL 9005)	 weiß matt (RAL 9016)
	 schwarz matt (RAL 9005) / chrom	 weiß matt (RAL 9016) / chrom
	 schwarz matt (RAL 9005) / messing	 weiß matt (RAL 9016) / messing

<b>Gehäuse:</b>	Aluminium pulverbeschichtet weiß oder schwarz matt (individuelle RAL-Farben auf Anfrage)
<b>Lichtkopf:</b>	Kopf 365° dreh- und 90° schwenkbar   Ein Bajonettverschluss fixiert den Lichtkopf am Gehäuse und ermöglicht einen schnellen partiellen Austausch.
<b>Lichtquelle:</b>	1 × standard-LED (High CRI), Ra > 95 (typ. 98) 1 × dim2warm-LED, 12 W, Ra > 95 (typ. 97)
<b>Lebensdauer:</b>	Standard-LED: L90 (10 k) > 61.000 h (IES LM-80 / TM-21) dim2warm-LED: L80 (10 k) > 50.000 h (IES LM-80 / TM-21)
<b>Betriebsgerät:</b>	inklusive
<b>Betriebsbereich:</b>	AC 220V–240V / 50Hz–60Hz
<b>Zubehör:</b>	umfangreiches Zubehör – Wechseloptiken, LSD-Spezialdiffusoren, Wabenraster und Shutter – für fein abgestimmte Abstrahlwinkel und Lichtlenkung (siehe Zubehörübersicht unter <a href="http://mawa-design.de">mawa-design.de</a> )
<b>Schutzklasse:</b>	I
<b>Schutzart:</b>	IP20
<b>Gewicht:</b>	720 g

LVK auf [mawa-design.de](http://mawa-design.de) unter Leuchten

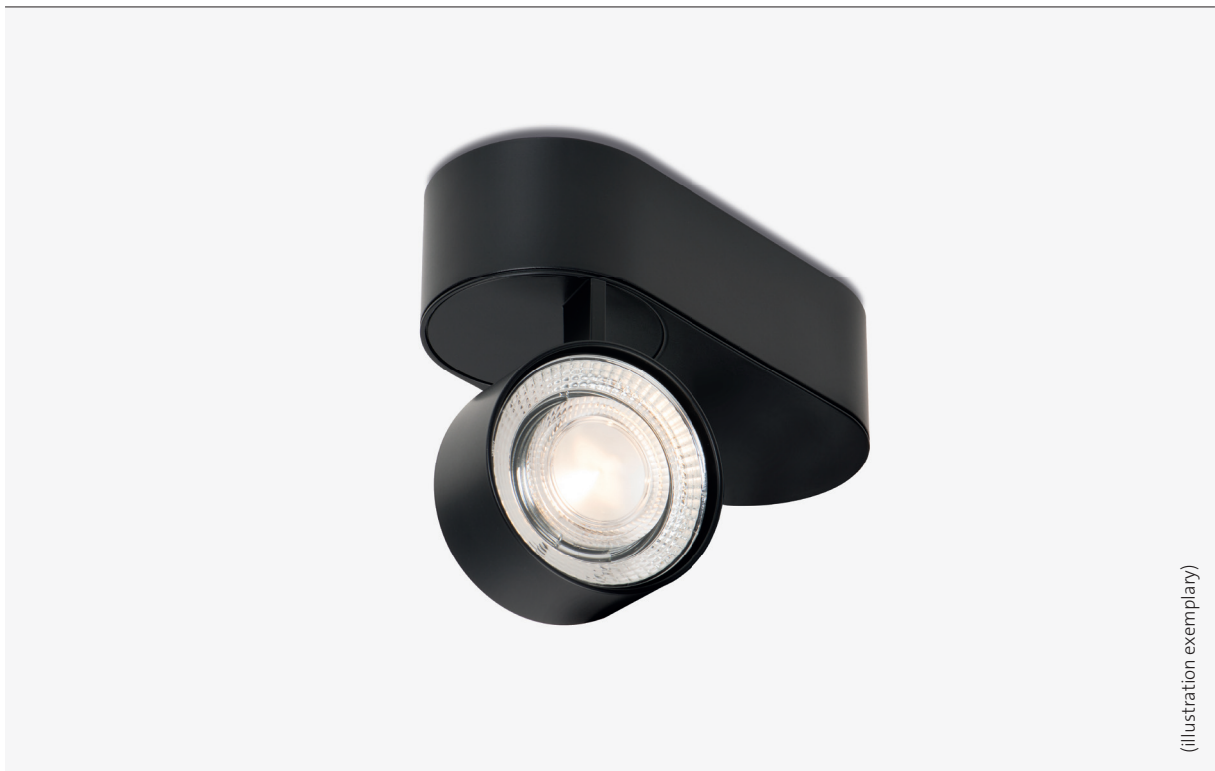


# wittenberg 4.0 | wi4-ab-1ov

SURFACE-MOUNTED SPOTLIGHT

Compact dimensions, minimalist design and extensive design versatility.

\* Luminaire series suitable for both private use and sophisticated specialized applications



(illustration exemplary)

Design: Jan Dinnebier, mawa / Engineering: mawa

Product variants	Performance in W <sup>LED</sup>	lenses with beam angle in degrees	Dimming Matchcode	Light colour and luminous flux <sup>LED</sup> in Kelvin and Lumen
HighCRI	12,7 W	12°/ 24°/ 38°	-4, -7, -9	2700 K / 930 lm, 3000 K / 980 lm, 4000 K / 1100 lm
d2w	12 W	12°/ 24°/ 38°	-4, -7, -9	1800-3000 K / 1045 lm

(exchangeable by means of vacuum cup or silicone pad) (further light colours on request)

Dimming match code abbreviations: -2 Rotary potentiometer on housing / -4 DALI / -7 Phase-cut dimming / -9 Bluetooth

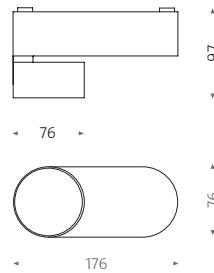










# wittenberg 4.0 | wi4-ab-1ov

SURFACE-MOUNTED SPOTLIGHT

Dimensions:



<b>Colour:</b>	 black matt (RAL 9005)	 white matt (RAL 9016)
	 black matt (RAL 9005) / chrome	 white matt (RAL 9005) / chrome
	 black matt (RAL 9005) / brass	 white matt (RAL 9005) / brass

<b>Housing:</b>	Aluminium housing powder-coated, white or black matt (individual RAL colours on request)
<b>Light head:</b>	Spotlight 365° rotatable and 90° tiltable   A bayonet catch fastens the light head in the housing and allows for quick partial exchange.
<b>Light source:</b>	1 × standard-LED (High CRI), Ra > 95 (typ. 98) 1 × dim2warm-LED, 12 W, Ra > 95 (typ. 97)
<b>Life time LED:</b>	Standard-LED: L90 (10 k) > 61.000 h (IES LM-80 / TM-21) dim2warm-LED: L80 (10 k) > 50.000 h (IES LM-80 / TM-21)
<b>Control gear:</b>	included
<b>Operating area:</b>	AC 220V–240V / 50Hz–60Hz
<b>Accessories:</b>	Extensive range of accessories – interchangeable optics, LSD-special diffusers, honeycombs and shutters – available for finely tuned beam angles and light control (See accessory overview at <a href="http://mawa-design.de">mawa-design.de</a> )
<b>Protection class:</b>	I
<b>Degree of protection:</b>	IP20
<b>Weight:</b>	720 g

LDC on [mawa-design.de](http://mawa-design.de) under Lighting